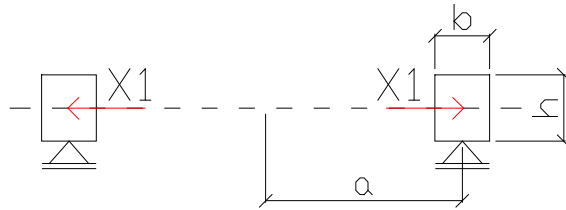


KRUZNI PRSTEN

-RADIJALNA SILA

-imamo samo normalnu silu N

$$N = a \cdot X_1 \Rightarrow s = \frac{N}{bh} \Rightarrow e = \frac{N}{Ebh} \Rightarrow u = e \cdot a$$



-RASPODELJENI MOMENTI

$$M = X_2 \cdot a \Rightarrow s = \frac{M}{I} \cdot y \left(I = \frac{bh^3}{12} \right)$$

$$e = \frac{s}{E} \Rightarrow u = e \cdot a$$

$$d_{11} = u_b^{X1=1}$$

$$d_{22} = c^{X2=1} = -\frac{u_a - u_{a'}}{d}$$

$$d_{12} = u_a^{X2=1}$$

